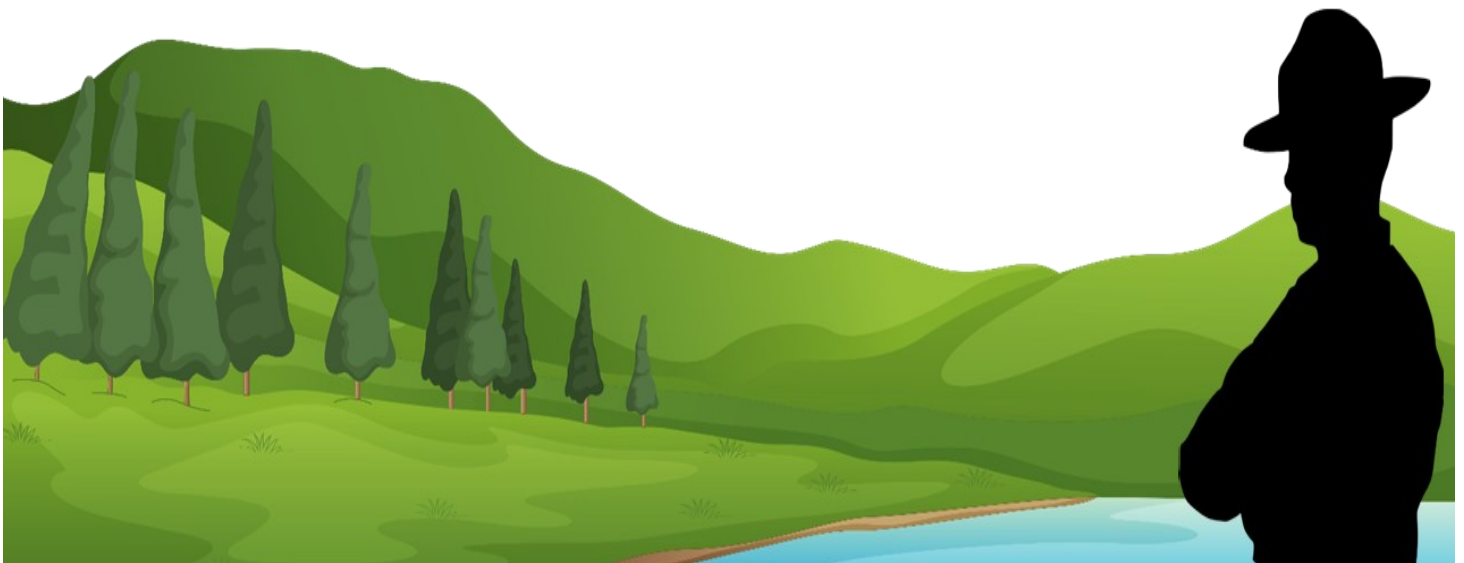


# Claytor Lake State Park

# JUNIOR RANGER

## 2024 Program



# What Do Rangers Do?

Virginia State Parks rangers do a variety of jobs. What kind of ranger would you like to be?

Maintenance rangers keep the park clean and operating properly. If you enjoy how the park looks today, thank a maintenance ranger. If you see something that needs some attention, let us know!

## Maintenance Ranger

## Contact Ranger

Contact rangers welcome our guests at entrance points, visitor centers and the gift shop. They are typically the first person guests will encounter and interact with.

Law enforcement rangers preserve the environment and keep our guests safe by enforcing the rules and responding to emergencies. These rangers are here to help!

## Law Enforcement Ranger

## Interpretive Ranger

Interpretive rangers educate park guests and lead activities that help people understand the natural, historical and cultural resources that make Claytor Lake so special.

# Junior Ranger, you are on your way!

To become a Claytor Lake State Park Junior Ranger simply complete a total of ten items found in this packet. This can include any combination of items found in the following sections:

- ◆ Ranger Guided Programs
- ◆ Self-guided Programs
- ◆ Activities
- ◆ Fun and Games



shutterstock.com · 1432302956

When you have completed this part of your journey, bring your packet to the Park Office, Water's Edge Meeting Facility or Contact Station to receive your Junior Ranger patch and certificate.

To begin your journey sign the Junior Ranger Pledge found below:

I, \_\_\_\_\_, pledge to

- Preserve and protect Claytor Lake State Park
- Care for my natural and historical resources
- Share what I learn with others
- Obey all safety rules
- Continue to explore and discover

Continue your Junior Ranger journey by turning to the next page.





# Self-Guided Programs



**Howe House History Tour** – Who was Haven Howe? Participate in person or virtually as we examine the fine craftsmanship of the Howe House and learn about its builder, inhabitants and history. To take the tour, visit: <https://arcg.is/0H089v1>.



**Then and Now History Tour** – Take a hike back in time by visiting the location of our collection of photos and videos from past years at Claytor Lake State Park. Enjoy your tour in person or from the comfort of your own cabin, tent or yurt by visiting <https://tinyurl.com/clsphistory>.



**Virtual Tree Identification Tour** – Join us on a real or virtual hike through Claytor Lake State Park as we take a closer look at some of our beautiful native trees. You can start the tour at the Howe House or do it in reverse and start at the beach. The hike is about one mile long from start to finish. <https://tinyurl.com/clspreetour>.



**5K Cross Country Trail** – Within Claytor Lake State Park's trail system, lies the Troop 244 5K Cross Country Trail. This designated 5K trail is perfect for both new and seasoned runners to enjoy. The 5K trail begins on the Lakeview Trail in front of the Water' Edge Meeting Facility and ends on Lakeview Trail in front of the lodges. 5K trail maps are available at the trail entrance.



**TRACK Trail Adventures** – These adventures are designed to help kids explore nature through the use of self-guided brochures. The brochures are located at the Shady Ridge Trailhead. Claytor Lake State Park's trail adventures include: Animal Athletes, Bug Out, Flower Power and Fun With Fungi. You can also view or print brochures in advance or complete an e-Adventure online. Remember to TRACK your adventure online at [kidsinparks.com](http://kidsinparks.com) to win free prizes!



**Little Free Library** – Feel free to grab a book or leave one behind for someone else. There is a Little Free Library located in the Water's Edge Meeting Facility lobby and one near the bathhouse in Campground D.



**The Ruins Chronolog** - Contribute to citizen science by helping us create a time lapse of this mysterious site. With your help, we can track the plant growth and environmental changes overtime. Simply visit the site located at the beach picnic area to the right of the beach, take a photo and submit it!



**Claytor Lake Underwater Webcam** - Observe what's under the lake with the 24/7 live feed from our underwater webcam. Watch the camera for a few minutes and see if you can identify any fish (or other animals) that swim by. To watch the feed visit [claytorlakespa.org](http://claytorlakespa.org) and click on the webcam tab at the top of the screen.



**Claytor Lake Visitor Center** - Learn about the park and some of its inhabitants with interactive displays at our park visitor center. Stop in the historic Howe House any time the park is open and take the door on the right. Have a great visit and don't forget to sign the guestbook on your way out.



# Ranger Guided Programs

Attend any of the following ranger-guided programs and have a ranger sign next to the program you attended. Weekly program schedules are posted throughout the park, online and on the small weekly fliers available at the contact station.

<u>Program Attended</u>	<u>Date Attended</u>	<u>Ranger Signature</u>
Campfire Program	_____	_____
Claytor Crafts	_____	_____
Claytor Lake History Tour	_____	_____
Nature Hike	_____	_____
Owl Prowl	_____	_____
Prints in Parks	_____	_____
Roaming Ranger	_____	_____
Sky Fishing	_____	_____
Survival 101- Edible/Medicinal Plants	_____	_____
Survival 101- Shelter Building	_____	_____
Survival 101- Fire Starting	_____	_____
Light Up The Lake	_____	_____
Visit the Discovery Center	_____	_____
What's Your Wingspan?	_____	_____
Outdoor Skills	_____	_____
Animal Feedings	_____	_____
_____	_____	_____
_____	_____	_____
_____	_____	_____

# Activity 1 - Ecosystem Give and Take

## Word Bank\*:

food          nutrients          nesting site          shelter  
oxygen          disperses          moisture          energy  
stabilizes          carbon dioxide

\*(Words may be used more than once)



- [1] The sun transfers \_\_\_\_\_ to the pine tree.
- [2] The air gives \_\_\_\_\_ to the pine tree.
- [3] The pine tree releases \_\_\_\_\_ to the air.
- [4] The soil provides \_\_\_\_\_ and \_\_\_\_\_ to the pine tree.
- [5] In return, the pine tree \_\_\_\_\_ the soil with its roots.
- [6] The pine tree provides a \_\_\_\_\_ for a robin.
- [7] The pine tree gives \_\_\_\_\_ to a field mouse.
- [8] In exchange, the field mouse \_\_\_\_\_ the seeds of the pine tree.
- [9] The mouse might become \_\_\_\_\_ for a black rat snake.
- [10] A dead branch of the pine tree provides \_\_\_\_\_ and \_\_\_\_\_ for termites.
- [11] As the branch decays it gives \_\_\_\_\_ back to the soil.
- [12] Later, the termites might become \_\_\_\_\_ for a striped skunk.

Can you think of more transactions that might take place in this ecosystem?

Write or draw them here:

Answers: [1] energy [2] carbon dioxide [3] oxygen  
[4] nutrients, moisture [5] stabilizes [6] nesting site [7] shelter  
[8] disperses [9] food [10] food, shelter [11] nutrients [12] food

# Activity 2 - Explore Native Plants through Field Journaling

A field journal is a record of what you see or observe and cover a variety of topics. In this field journal we will be studying plants. You may include notes, drawings, photographs, the location and time of year.

Use the space provided to describe plants you find in the park. Include the color and size of the plant as well as a sketch and any other details you think are important.

Remember to leave the plant as you found it.

---

---

---

---

---

---

---

---

---

---

---

---

---

---

---

---

---

---

---

---

---

---

---



## Example:

Name: lady slipper orchid

Location: Hidden Valley Trail, Claytor Lake State Park, Dublin, VA

Date: May 23, 2024

Description:

Flowers are pink

Leaves are dark green or mottled

**Plant 1.**

**Activity 2 Continued:**

---

---

---

---

---

---

---

---

---

---

---

---

---

---

---

---

---

---

---

---

---

---

---

---

---

---

---

---

---

---

---

---

---

---

---

---

---

---

---

---

---

---

---

---

---

**Plant 2.**

**Plant 3.**



## Activity 3 - Sit, Look, Listen

**Even if we can't see them, there are always animals around us!**

If you want to find animals, sometimes it is as easy as sitting quietly somewhere for a few minutes and listening.

By drawing a sound map you can create a record of the sounds you hear. This is a common tactic scientists use to study and monitor birds.

Imagine that you are in the center of the rectangle. Mark X's around you on the map where you hear sounds. Mark ALL sounds.



Make a list below of everything you heard:

---

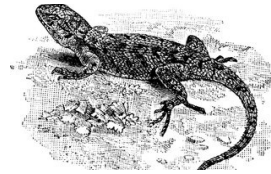
---

---

---

---

# Activity 4 - Field Journaling



Use this space to write about or draw your wildlife sightings, observations and experiences while visiting Claytor Lake State Park!

Date: \_\_\_\_\_ Time: \_\_\_\_\_ Location: \_\_\_\_\_ Weather: \_\_\_\_\_

---

---

---

---

---

---

---

---

---

---

---

---

---

---

---

---

---

---

---

---

---

---

---

---

---

---

Be creative- draw what you see.

A large, empty rectangular box with a thin black border, occupying the bottom half of the page. It is intended for drawing the wildlife sightings mentioned in the text above.

# Activity 5 - Critter Tracks

Match the tracks to the correct animal!

Using the letter under each track, match the animal to the tracks it makes:



A



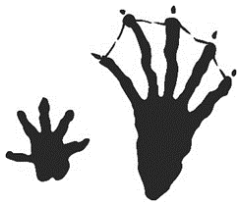
B



C



D



E



F



G



E



1. \_\_\_\_\_



2. \_\_\_\_\_



3. \_\_\_\_\_



4. \_\_\_\_\_



5. \_\_\_\_\_



6. \_\_\_\_\_



7. \_\_\_\_\_



8. \_\_\_\_\_

Answers: 1.C 2.E 3.B 4.E 5.D 6.A 7.C 8.D

# Activity 5 - All About Opossums

Color the Virginia Opossum below, then test your opossum knowledge with a quiz.

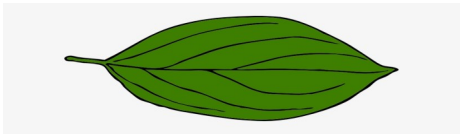


## Opossum True or False Quiz:

1. \_\_\_\_\_ One of the opossum's favorite foods is ticks.
2. \_\_\_\_\_ Opossums are North America's only marsupial.
3. \_\_\_\_\_ Opossums are susceptible to rabies.
4. \_\_\_\_\_ Newborn opossums (called joeys) are about the size of a honeybee.
5. \_\_\_\_\_ Adult opossums can hang by their tails.

1. True - opossums can eat up to 3,000 ticks in a season. 2. True - opossums raise their young in a special pouch. 3. False - Opossums have a low body temperature which makes them very unlikely to contract rabies and other diseases. 4. True - as marsupials, opossums are tiny when they are born and must stay in their mother's pouch. 5. False - While opossums have prehensile tails, they only use them as extra stability when climbing.

# Activity 7 - Observation Station

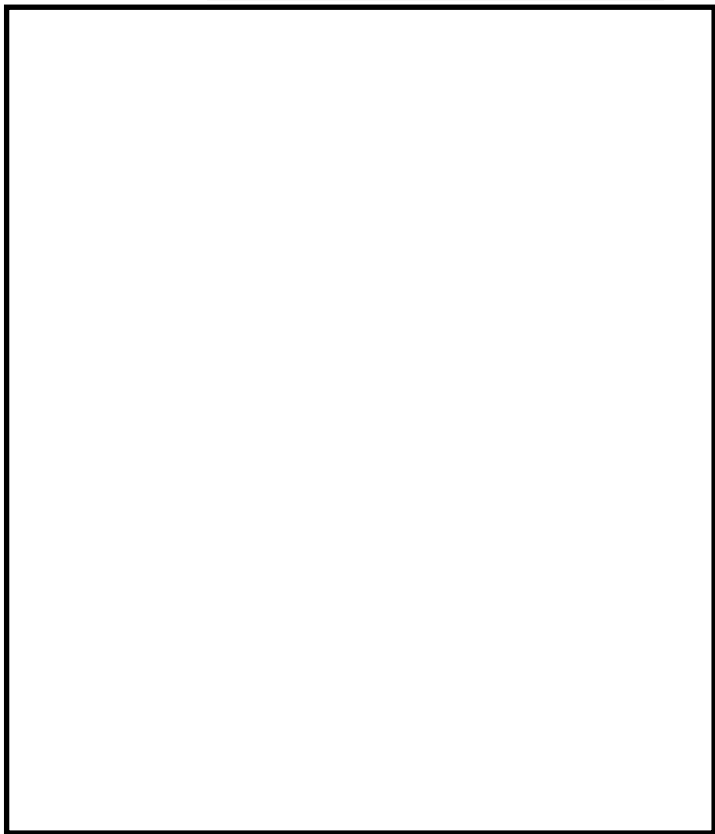


Find a leaf that looks interesting to you. Use the open space to the right to draw, trace or do a rubbing of the leaf.

Now jot down any observations or thoughts you may have about the leaf.

Include:

- The color of the leaf.
- How does it feel in your hands?
- Does it have a smell?
- From which tree did it come?
- How do you think the leaf got from where it was to where it is now?
- What will happen to the leaf now?
- Anything else you notice about the leaf.



---

---

---

---

---

---

---

---

---

---

---

---

---

---

---

---

---

---

---

---

---

---

---



# Fun and Games 1 - Claytor Lake Word Search

S F S Y H H B D Y F E G T R S  
T F R C D C E O I V N C J E H  
C P E Z A E A S A I K O E V O  
E R W Y R M H E R T O R H I W  
S G O V I I P O B A T F A R E  
N S L T N Z L F S K U N K I S  
I X F G Y P S W I M M I N G Q  
Q W D W X A N T X R A E B H U  
V U L E U O L S W K E E K I I  
P E I I O M B C D S P T R K R  
F W W C S M O R E S H A Y I R  
C C C N D B S N B K N E X N E  
V A G N I P M A C G A S L G L  
R G N I K I B F E U J L S L Q  
M S S X Z K F R P N H H R Y S

BEACH

FISHING

RIVER

BEAR

HIKING

SHELLS

BIKING

HOWE

SKUNK

BOAT

INSECTS

SMORES

CAMPFIRE

LAKE

SQUIRREL

CAMPING

RACCOON

SWIMMING

CLAYTOR

RANGER

TREES

DEER

WILDFLOWERS

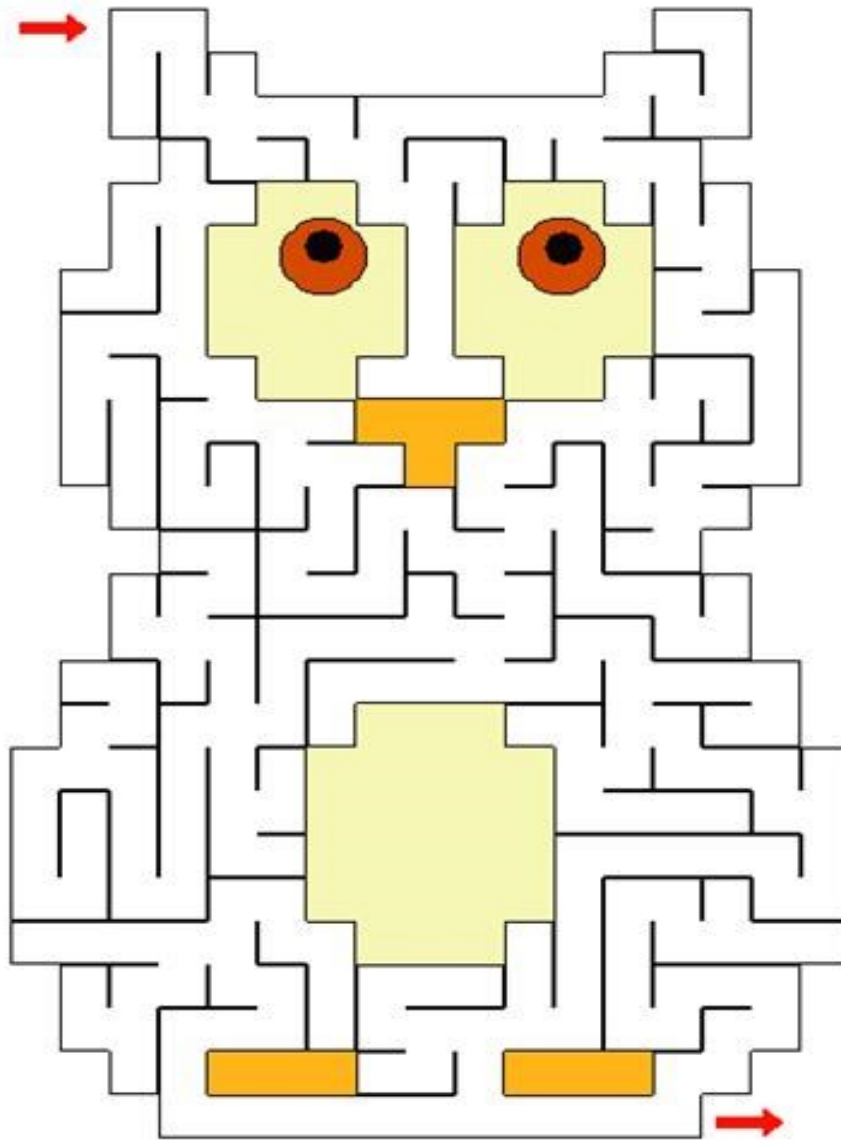
EXPLORING

## Fun and Games 2 - Whoo Heard an Owl?

The **Eastern Screech Owl** is a small owl that inhabits open woodlands, dense stands of young trees, parks, wooded suburban areas, mature orchards and wetlands in eastern North America. This species is found throughout Virginia.

In Claytor Lake State Park screech owls are most often seen and heard in the late evenings and early mornings. Have someone use a bird call app (such as Audubon) on their phone to play an eastern screech owl call and attempt to get an answer.

Complete the owl maze below:



# Fun and Games 3 - Claytor Lake History Crossword

Unscramble each of the clue words. Copy the letters in the numbered cells to other cells with the same number.

1.This river flows into Claytor Lake and provides the water for the lake.

\_\_\_\_\_ (2 words)

2.This was built during the Great Depression and was completed in

1939. \_\_\_\_\_ (3 words)

3. In 1773, William Christian moved to \_\_\_\_\_'s Bottom with his family.

4. This was moved from the lake in 1989 and was one of five from the original house. (hint: it's outside of the park office) \_\_\_\_\_

\_\_\_\_\_ (2 words)

5. \_\_\_\_\_ built the Howe House between 1876 and 1879. (2 words)

6. In what town is the state park located? \_\_\_\_\_

**Ultimate Question-** What do you call someone who studies the environment?

1. WEN REIVR

9			3				

2. ROALCYT LEAK DMA

12						11			5			13				8		

3. DAUDNRK

7						

4.NRICIAHTS CYMHEIN

14										10								1

5. VANEH WOEH

2					6			

6. BILUND

4					

															S	
--	--	--	--	--	--	--	--	--	--	--	--	--	--	--	---	--

1 2 3 4 5 6 7 8 9 10 11 12 13 14 11

